

# chapter 3

## ILLUSTRATED PARTS CATALOG

This chapter provides an illustrated parts breakdown and a reference for spare part numbers and option part numbers for the Compaq Armada 7400 Series of Personal Computers.



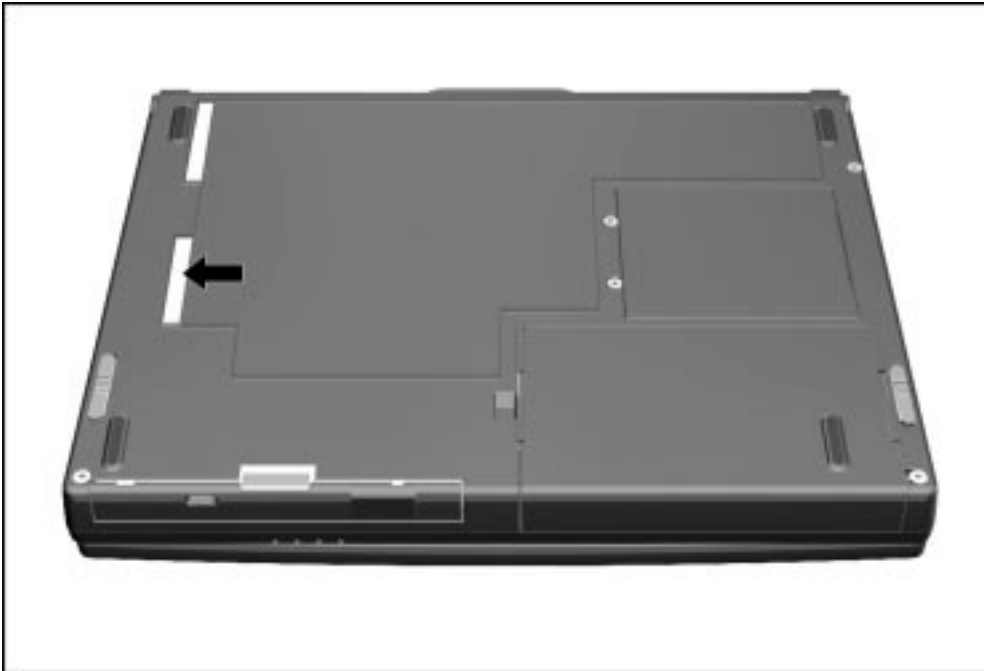
**CAUTION:** Only spare parts listed in this chapter should be used to service an Armada 7400 computer. Failure to follow this caution can cause damage to the computer.

---

## 3.1 Serial Number Location

When ordering parts or requesting information, provide the computer serial number and model number located on the bottom of the computer (Figure 3-1). Refer to Table 1-1 for an explanation of the model number.

The tables throughout this chapter refer to “config. codes”. These codes provide information about the computer’s features. The config. code is also located on the bottom of the computer. Refer to pages 1-2 and 1-3 for more information on config. codes.



**Figure 3-1.** *Serial Number Location*

## 3.2 Computer System Major Components

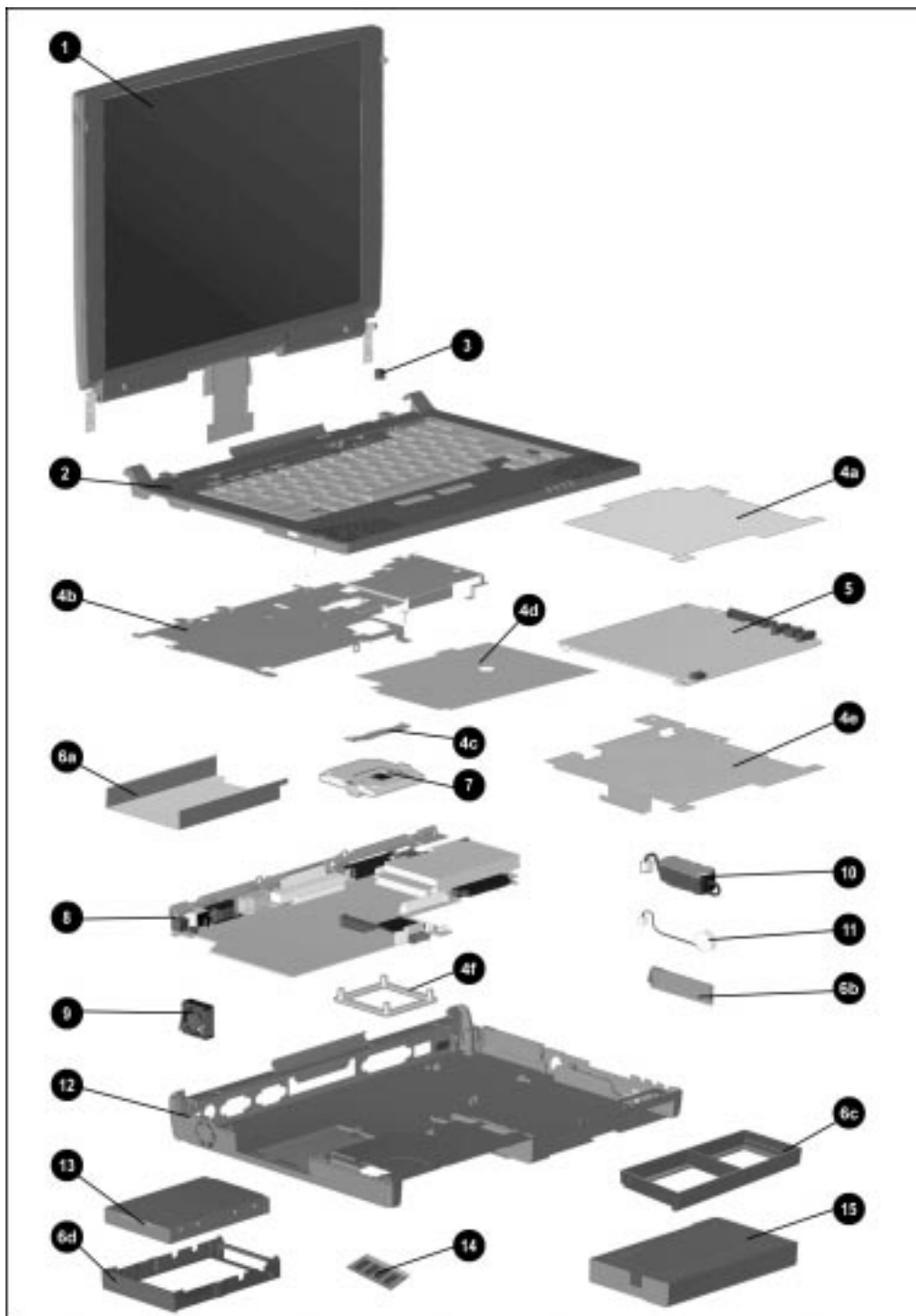


Figure 3-2. Computer System Major Components

**Table 3-1**  
**Spare Parts: Computer System Major Components**

Item	Description	Spare Part Number
1	Display assembly (spared as "hingeup" assembly, includes logo kit and screw covers; display size varies depending on model). Refer to Section 3.3 for individual display component spare kits	
	14.1-inch, XGA, CTFT (use only on computers with config. codes beginning with "CDKZ" and "CH8")	400136-001
	13.3-inch, XGA, CTFT (do not use on computers with config. code beginning with "CH8")	204274-001
2	Keyboard/CPU cover assembly (includes keyboard label kit)	204278-XXX
	Arabic -171 German -041 Portuguese -131	
	Belgian -181 International -002 Spanish -071	
	Czech -221 Italian -061 Swedish -101	
	Danish -081 Japanese -291 Swiss -111	
	French -051 Korean -AD1 U.K. English -031	
	French Canadian -121 Latin American U.S. English/ Canadian -001	
	Norwegian -091	
3	EasyPoint III pointing device caps	314938-001
	Miscellaneous Hardware Kit	
	Use only on computers with config. codes starting with "CDK" and "CHS"	204260-002
	Use only on computers with config. codes starting with "BX" and "CN"	204260-001
	This kit includes the following:	
4a	Audio/modem board insulator	
4b	EMI shield (with heatpipe)	
4c	Heatpipe mount leaf spring	
4d	Battery bay insulator (not included with spares part numbers 204260-002)	
4e	MultiBay shield	
4f	Processor attach bracket	
	Processor thermal pad (not illustrated)	
5	Audio/modem board assembly (includes DAA cover; modem speed varies depending on model)	
	56 Kbps (use only on computers with config. codes starting with "CDK" and "CHS")	33 Kbps (Use only on computers with config. codes beginning with "BX" and "CN")
	U.S. 341845-001	U.S. 313864-001
	International 341845-002	International 313864-002
	Audio only board (includes DAA cover and RJ11 cover)	
	Use only on computers with config. codes starting with "CDK" and "CHS"	400135-001
	Use only on computers with config. codes starting with "BX" and "CN"	204264-001
	Miscellaneous Plastics Kit	204262-001
6a	Hard drive guide/rail	not illustrated:
6b	PC Card door	DAA cover
6c	MultiBay weight saver	RJ11 cover
6d	Hard drive tray	Computer feet
		Left and right tilt feet with covers

*continued*

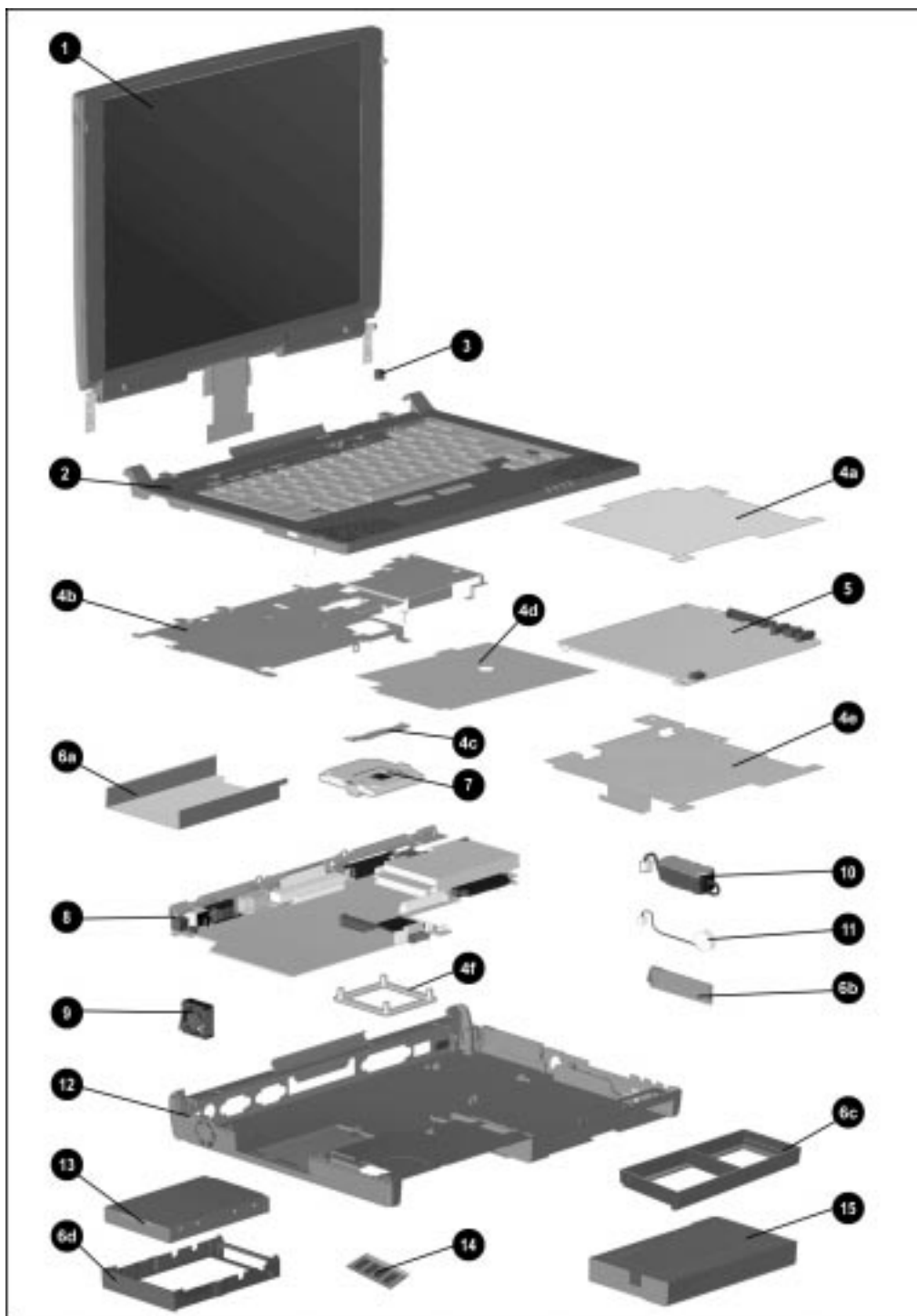


Figure 3-3. Computer System Major Components (continued)

**Table 3-1** *(continued)*

Item	Description	Spare Part Number
7	Processor board assembly (includes 4 spacers and thermal pad, not illustrated; processor speed varies depending on model)	
	Intel Mobile Pentium II 366-MHz with MMX technology (use only on computers with config. codes starting with "CDKZ" and "CH")	400138-001
	Intel Mobile Pentium II 333-MHz with MMX technology (use only on computers with config. code starting with "CDK")	341843-001
	Intel Mobile Pentium II 300-MHz with MMX technology (use only on computers with config. codes "BXL1" through "BXL5", "BXL8", and config. codes starting with "CNN" or "CDKZ")	204266-001
	Intel Mobile Pentium II 266-MHz with MMX technology (use only on computers with config. codes starting with "BXK", "BXL6", "BXL7", "BXL9", or "CDKZ")	204267-001
8	System board (includes U-channel, hard drive guide/rail, and expansion connector shield)	
	Supports 366- and 333-MHz processor (use only on computers with config. codes starting with "CDK" and "CH")	341842-001
	Supports 300- and 266-MHz processor models (use only on computers with config. codes starting with "BXK", "BXL", "CDKZ" and "CNN")	204268-001
9	Fan assembly (includes 2 isolators)	204457-001
10	Auxiliary battery	220807-001
11	Real Time Clock (RTC) battery	258634-002
12	CPU base assembly (includes memory compartment cover and PC Card door)	204258-001
13	Hard drive (hard drive size varies depending on model)	
	10.0 GB (use only on computers with config. codes starting with "CDKZ" and "CH")	341841-001
	8.1 GB (use only on computers with config. code starting with "CDK")	400137-001
	6.4 GB (use only on computers with config. codes "BXL1" through "BXL6", "BXL8" and config. codes starting with "CNN" and "CDKZ")	204272-001
	4.0 GB (use only on computers with config. codes starting with "BXK", "BXL7" and "BXL9")	204271-001
14	Memory expansion board (amount of memory varies depending on model)	
	128 MB	310345-001
	64 MB	313918-001
	32 MB	313911-001
	16 MB	313917-001
15	Battery pack, Li-ion	
	Use only on computers with config. codes starting with "CDK" and "CH"	342688-001
	Use only on computers with config. codes starting with "BX" and "CN"	204263-001

### 3.3 Display Components

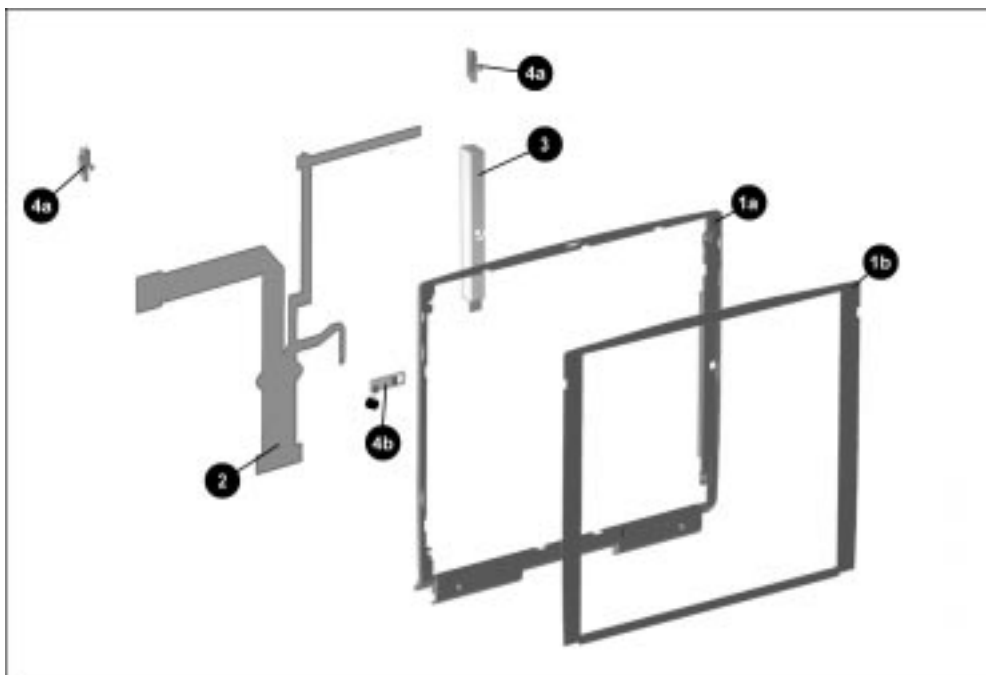
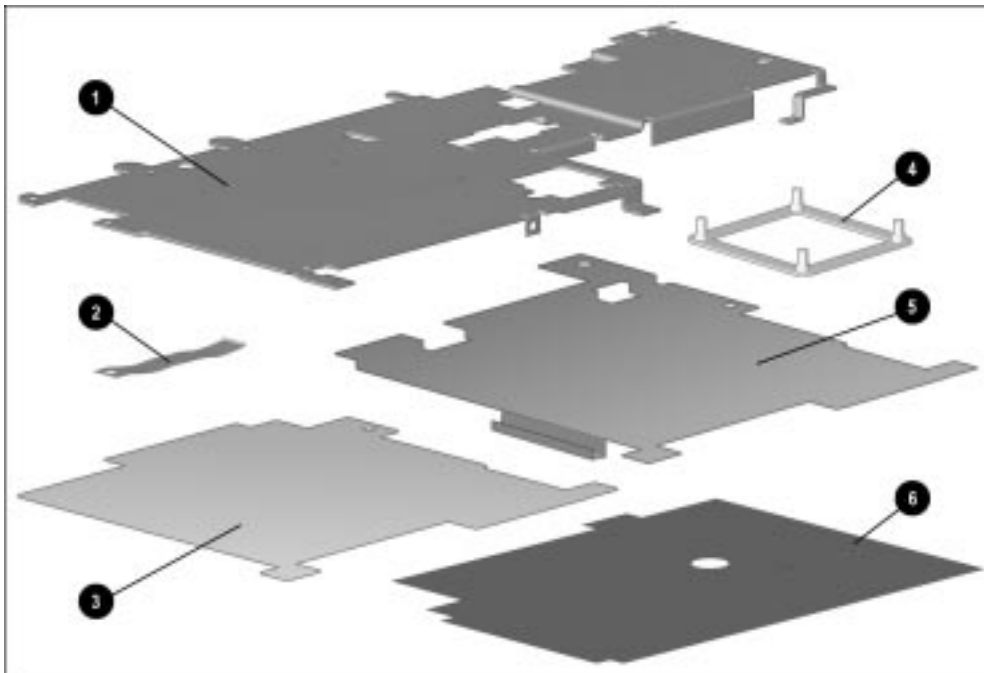


Figure 3-4. Display Components

Table 3-2  
Spare Parts: Display Components

Item	Description	Spare Part Number
1a	Display Bezel Kit	204393-001
1b	Bezel	
	Overlay	
	Screw covers (2, not illustrated)	
2	Miscellaneous Cable Kit	204390-001
	Display cable	
	Bezel (illustrated in Item 1, above)	
	Overlay (illustrated in Item 1, above)	
	Screw covers (2, not illustrated)	
3	Inverter Kit	204391-001
	Bezel (illustrated in Item 1, above)	
	Overlay (illustrated in Item 1, above)	
	Insulator (not illustrated)	
	Screw covers (2, not illustrated)	
	Miscellaneous Display Kit	204392-001
4a	Left and right latches with springs (4, not illustrated)	
4b	Microphone assembly (includes microphone board, microphone, isolator, screen, and adhesive pad)	
	Screw covers (2, not illustrated)	

### 3.4 Miscellaneous Hardware Kit Components



*Figure 3-5. Miscellaneous Hardware Kit Components*

**Table 3-3**  
**Miscellaneous Hardware Kit Components**  
**Spare Part Number 204260-001**

Item	Description
1	EMI shield (with heatpipe)
2	Heatpipe mount leaf spring (with spring, not illustrated)
3	Audio/modem board insulator
4	Processor attach bracket
5	MultiBay shield
6	Battery insulator



### 3.5 Miscellaneous Plastics Kit Components

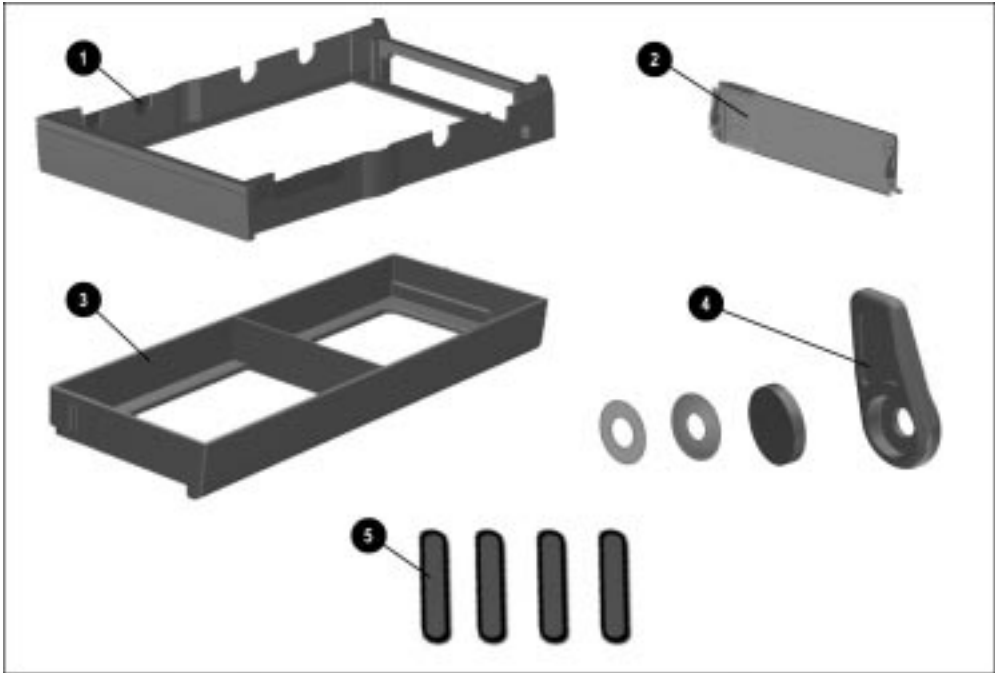


Figure 3-6. Miscellaneous Plastics Kit Components

Table 3-4  
Miscellaneous Plastics Kit Components  
Spare Part Number 204262-001

Item	Description
1	Hard drive tray (with insulator)
2	PC Card door
3	MultiBay weight saver
4	Left and right tilt feet, covers, washers (2)
5	Computer feet
Not illustrated:	
Hard drive guide/rail	
DAA cover	
RJ11 cover	

## 3.6 Power Equipment

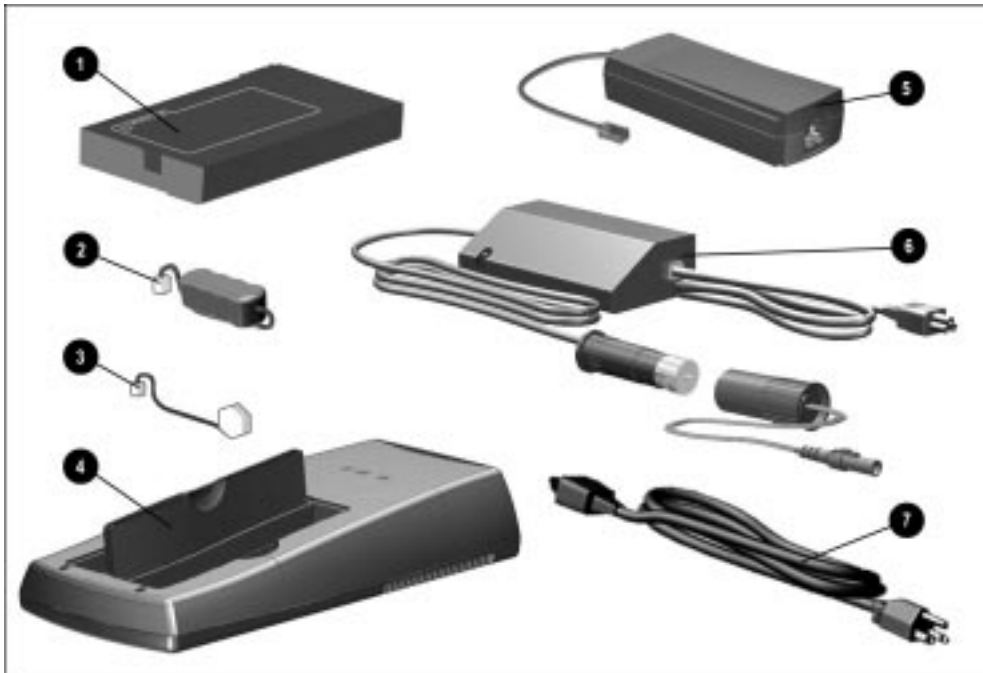
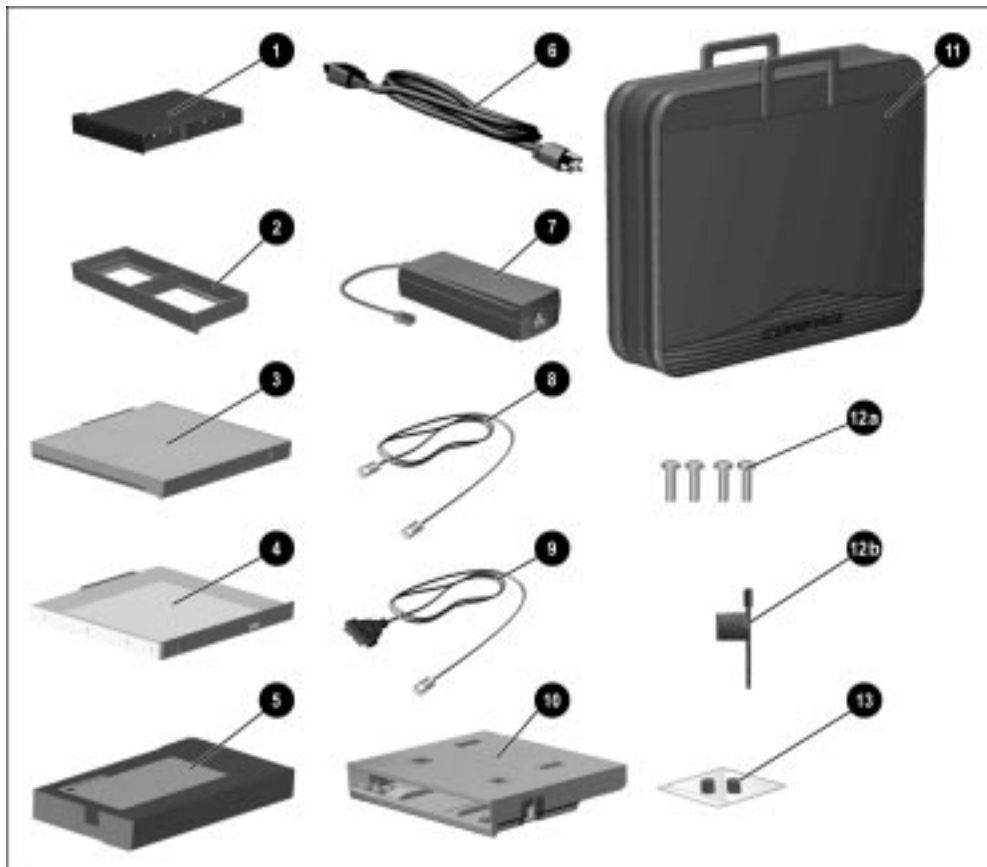


Figure 3-7. Power Equipment

**Table 3-5**  
**Spare Parts: Power Equipment**

Item	Description		Spare Part Number	
1	Battery pack, Li-ion		342688-001	
	Use only on computers with config. codes starting with "CDK" and "CH"		204263-001	
2	Auxiliary battery		220807-001	
3	Real Time Clock (RTC) battery		258634-002	
4	Battery charger		277734-001	
5	AC Adapter, 44 watt		204434-001	
6	Automobile/aircraft adapter		313919-001	
	Automobile/aircraft adapter cable		315083-001	
7	Power cord			
	Australian	246959-008	Korean	246959-009
	Danish	246959-005	French/German/ Swiss	246959-006
	European	246959-002	U.K. English/Asia	
	Italian	246959-004	Pacific/Hong Kong	246959-003
	Japanese	246959-007	U.S. English	246959-001

### 3.7 Items that Ship with the Computer



*Figure 3-8. Items that Ship with the Computer*

**Table 3-6**  
**Items that Ship with the Computer**

Item	Description	Spare Part Number
1	Hard drive (hard drive size varies depending on model) 10.0 GB (use only on computers with config. codes starting with "CDKZ" and "CH") 8.1 GB (use only on computers with config. code starting with "CDK") 6.4 GB (use only on computers with config. codes "BXL1" through "BXL6", "BXL8" and config. codes starting with "CNN" and "CDKZ") 4.0 GB (use only on computers with config. codes starting with "BXK", "BXL7" and "BXL9")	341841-001 400137-001 204272-001 204271-001
2	MultiBay weight saver (ships in accessory box)	spared in Miscellaneous Plastics Kit, spare part number 204262-001 (refer to Section 3.5)
3	Diskette drive, 1.44-megabyte, 3.5-inch (ships in accessory box)	204265-001
4	24-speed Max CD-ROM drive standard equipment on computer models with config. codes starting with "CDK" (except "CDKZ") and "BX" (except "BXL8") DVD-ROM drive standard equipment on computer models with config. codes "BXL8", "CH", "CNN1", and "CNN2"	100044-001 202837-001
5	Battery pack, Li-ion Use only on computers with config. codes starting with "CDK" and "CH" Use only on computers with config. codes starting with "BX" and "CN"	342688-001 204263-001
6	Power cable Australian Danish European Italian Japanese	246959-008 246959-005 246959-002 246959-004 246959-007
	Korean French/German/ Swiss U.K. English/Asia Pacific/Hong Kong U.S. English	246959-009 246959-006 246959-003 246959-001
7	AC Adapter, 44 watt	204434-001
8	Telephone cable (country specific, modem models only)	137256-001
9	Modem DAA cable (country specific, modem models only)	234409-003
10	Armada 7000 Removable Drive MultiBay Adapter	296589-002
11	Slipcase (Europe/Middle East/Africa, Latin America, and Japan only)	315108-001
	Security kit	204394-001
12a	Security screws (4)	
12b	Security screwdriver	
13	EasyPoint III pointing device caps (2)	314938-001

## 3.8 Options

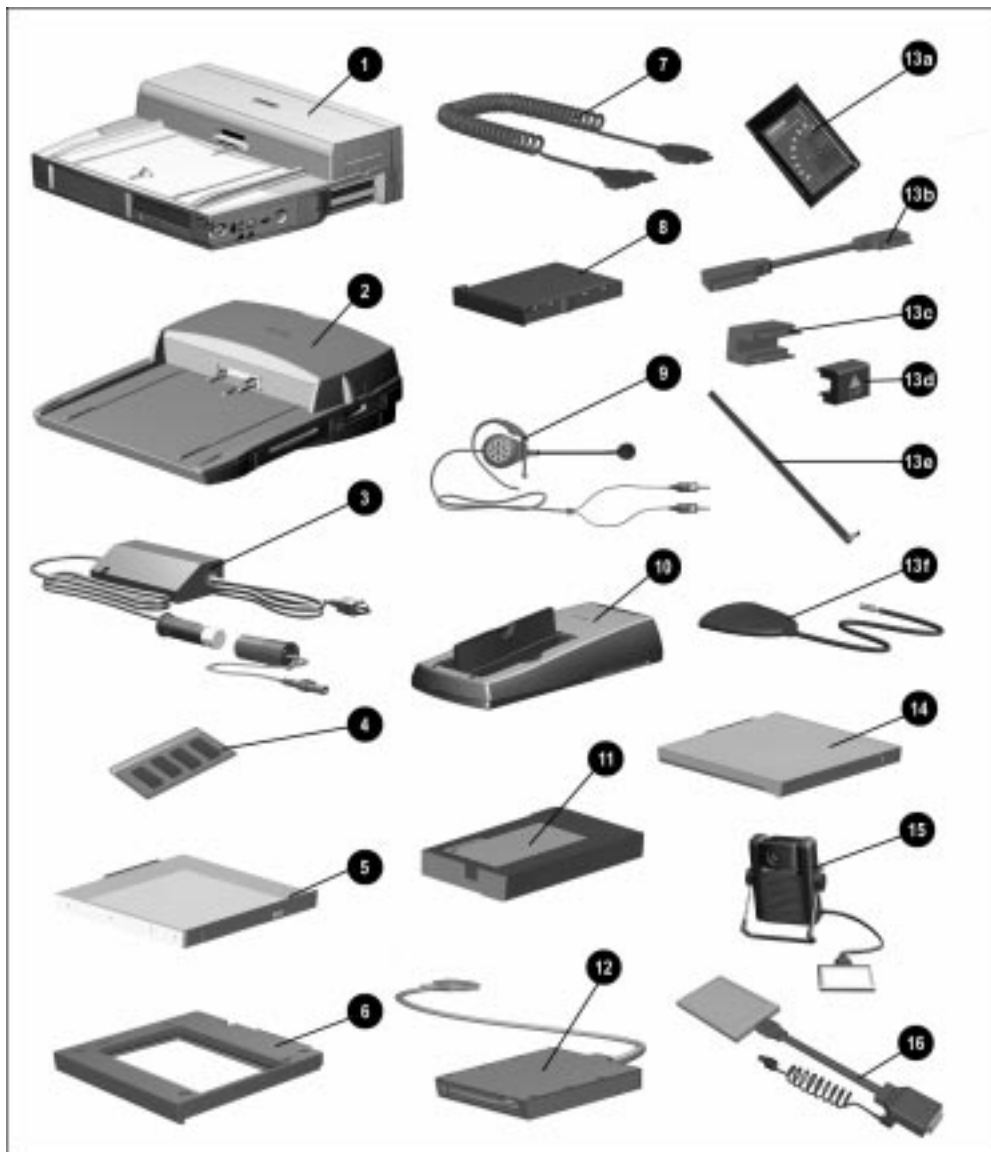
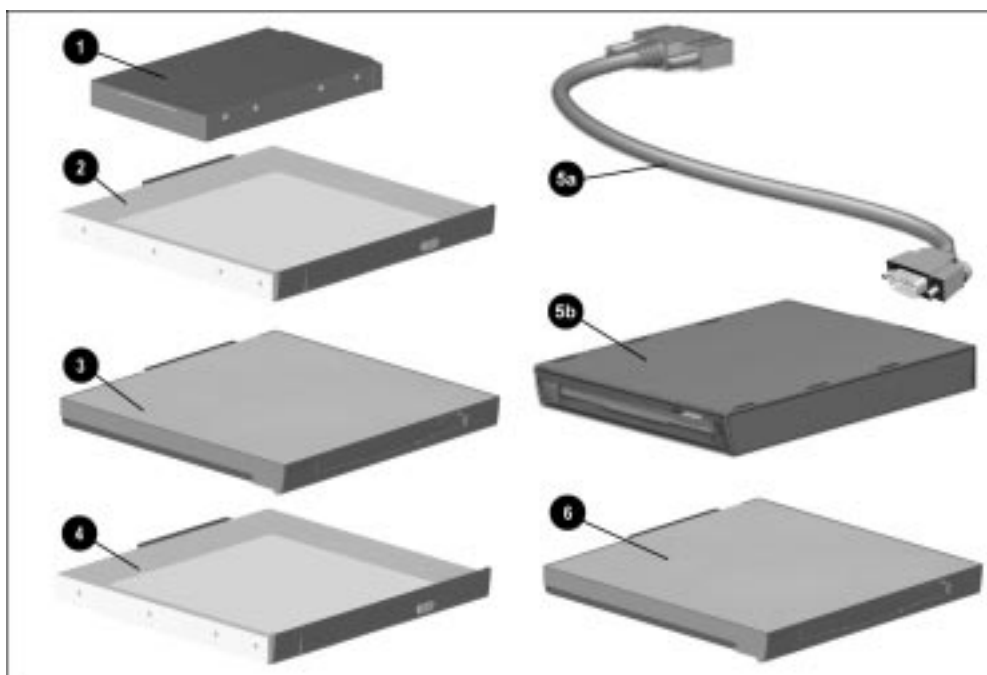


Figure 3-9. Options

**Table 3-7**  
**Spare Parts: Options**

Item	Description	Spare Part Number	Option Part Number
1	ArmadaStation II	n/a	203100-XXX
2	Armada MiniStation E (opal) Armada MiniStation EX (opal)	n/a	327137-XXX 327138-XXX
3	Automobile/aircraft adapter Automobile/aircraft adapter cable	313919-001 315083-001	296537-B21
4	Memory expansion board 128 MB 64 MB 32 MB 16 MB	 310345-001 313918-001 313911-001 313917-001	 315177-B25 314891-B21 314890-B21 314889-B21
5	DVD-ROM drive	202837-001	314914-B25
6	Hard Drive MultiBay Adapter	296587-002	267867-B25
7	Cellular phone cable GE & Ericsson CT7000 Motorola-MT/Elite Motorola-MicTac Nokia-232 Nokia-2120	 212035-001 212031-001 212030-001 212034-001 212033-001	 185272-001 185268-001 185267-001 185271-001 185270-001
8	Hard drive 10.0 GB (use only on computers with config. codes starting with "CDKZ" and "CH") 8.1 GB (use only on computers with config. code starting with "CDK") 6.4 GB (use only on computers with config. codes "BXL1" through "BXL6", "BXL8" and config. codes starting with "CNN" and "CDKZ")	 341841-001 400137-001 204272-001	 341814-B21 341839-B21 204220-B25
9	Headset	273139-001	220460-001
10	Battery charger	277734-001	220461-001
11	Battery pack, Li-ion Use only on computers with config. codes starting with "CDK" and "CH" Use only on computers with config. codes starting with "BX" and "CN"	342688-001 204263-001	104724-B25 267865-B25
12	External Diskette Drive Kit (includes cable) External Diskette Drive cable	290837-001 258575-002	297186-B21 325157-001
13a	SpeedPaq Cellular PC Card Kit	221227-001	221202-001 (for models with an internal modem)
13b	SpeedPaq Cellular PC Card		
13c	interconnect cable		
13d	modem interconnect block		221200-001 (includes a PC Card modem)
13e	computer interconnect block*		
13f	antenna		
	remote antenna base		
	cellular PC Card software (not illustrated)		
	* This component is included in the kit but does not work on the Armada 7400.		
14	SuperDisc LS-120 drive	327456-002	296502-B25
15	Portable Video Conferencing Kit (includes PC Card)	298450-001	296954-001
16	USB Cardbus PC Card	296864-001	296501-B21

## 3.9 Mass Storage Devices



*Figure 3-10. Mass Storage Devices*

**Table 3-8**  
**Spare Parts: Mass Storage Devices**

Item	Description	Spare Part Number
1	Hard drive (hard drive size varies depending on model) 10.0 GB (use only on computers with config. codes starting with "CDKZ" and "CH")	341841-001
	8.1 GB (use only on computers with config. code starting with "CDK")	400137-001
	6.4 GB (use only on computers with config. codes "BXL1" through "BXL6", "BXL8" and config. codes starting with "CNN" and "CDKZ")	204272-001
	4.0 GB (use only on computers with config. codes starting with "BXK", "BXL7" and "BXL9")	204271-001
2	24-speed Max CD-ROM drive	100044-001 204270-001
3	Diskette drive, 1.44-megabyte, 3.5-inch (standard equipment)	204265-001
4	DVD-ROM drive	202837-001
5a	External Diskette Drive cable	258575-002
5b	External Diskette Drive (available only as an option)	290837-001
6	SuperDisc LS-120 drive	327456-002

## 3.10 Miscellaneous

**Table 3-9**  
**Spare Parts: Miscellaneous (not illustrated)**

Description	Spare Part Number
Country Kit	
Domestic	400134-001
European	313865-001
	400134-002
	313865-002
Miscellaneous Screw Kit	204261-001

## 3.11 Documentation

**Table 3-10**  
**Spare Parts: Documentation (not illustrated)**

Description	Spare Part Number
<i>Armada 7400 Maintenance &amp; Service Guide</i>	204275-001
<i>Armada 7400 Illustrated Parts Map*</i>	204276-001
<i>ArmadaStation and Armada MiniStation Maintenance &amp; Service Guide</i>	296390-001
<i>ArmadaStation and Armada MiniStation Illustrated Parts Map*</i>	296391-001
<i>Armada 7400 Setup Poster &amp; Reference Guide: available in country kits or through fulfillment</i>	
*Not available in Europe, Middle East, or Africa	